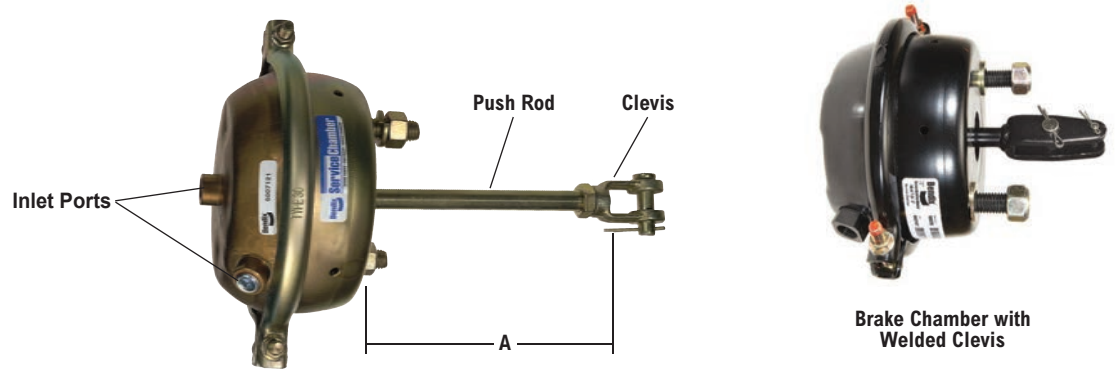


Brake Chambers

Fully Threaded Push Rod

V.M.R.S. 13-010-034

SD-02-1302



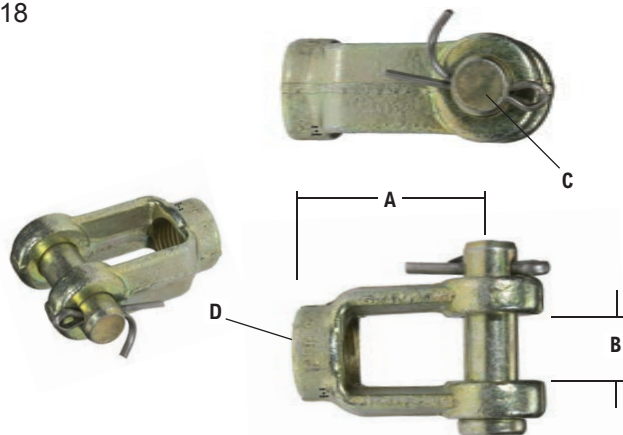
Brake Chamber Type	Stroke	Service New Pc. No. w/o Yoke	A Push Rod Length	Service New Pc. No. w/Yoke	Inlet Port Size	Push Rod Thread	Rubber Diaphragm	Clamp Band	Spring
Standard Yoke									
T12	1.75"	800822	8.60"	5007117N	1/4"-18 NPTF	1/2"-20 UNF	802486	800906	800918
T16	2.25"	800823	8.60"	5007118N	1/4"-18 NPTF	1/2"-20 UNF	802487	800907	
T20	2.50"	802990	8.20"	800824	3/8"-18 NPTF	5/8"-18 UNF	K025490	800908	800919
T24	2.50"	802986	7.80"	800825	3/8"-18 NPTF	5/8"-18 UNF	802489	800909	
T24 ELS	3.00"	—	8.00"	K025365	3/8"-18 NPTF	5/8"-18 UNF	801378		
T30	2.50"	800826	7.60"	5007121N	3/8"-18 NPTF	5/8"-18 UNF	802490	800910	800920
T30 ELS	3.00"	K025360	8.00"	K025356	3/8"-18 NPTF	5/8"-18 UNF	801379	800910	
T36 ELS	3.00"	800827	8.40"	5007122N	3/8"-18 NPTF	5/8"-18 UNF	802491	800911	800920
Welded Clevis									
T20	2.50"	—	2.25"	K058715	3/8"-18 NPTF	5/8"-18 UNF	802488	800908	800919
T24	2.50"	—	2.25"	K058691	3/8"-18 NPTF	5/8"-18 UNF	802489	800909	800919
T24 ELS	3.00"	—	2.25"	K058753	3/8"-18 NPTF	5/8"-18 UNF	801378	800909	800920
T30	2.50"	—	2.25"	K058721	3/8"-18 NPTF	5/8"-18 UNF	802490	800910	800919
T30 ELS	3.00"	—	2.25"	K058740	3/8"-18 NPTF	5/8"-18 UNF	801379	800910	800920



Clevis / Yoke Assemblies

For Brake Chambers & Rotochambers

V.M.R.S. 13-004-018

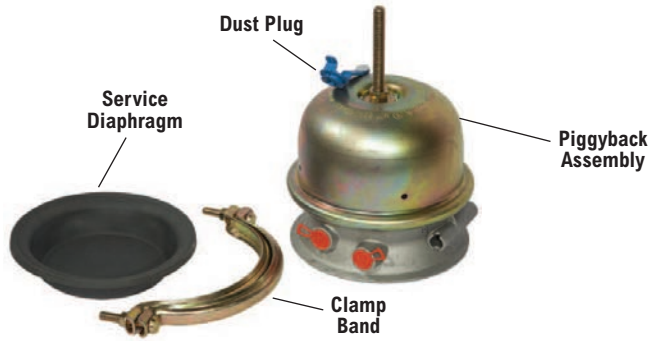
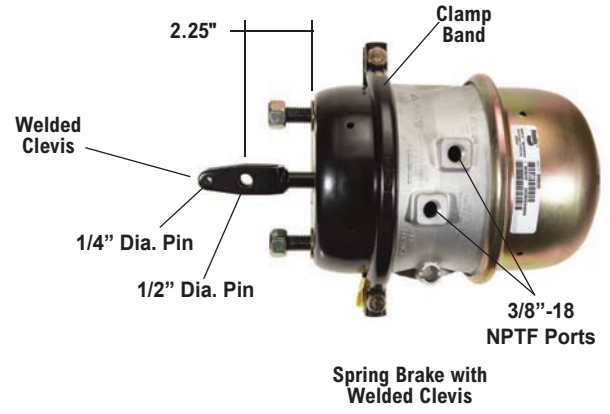
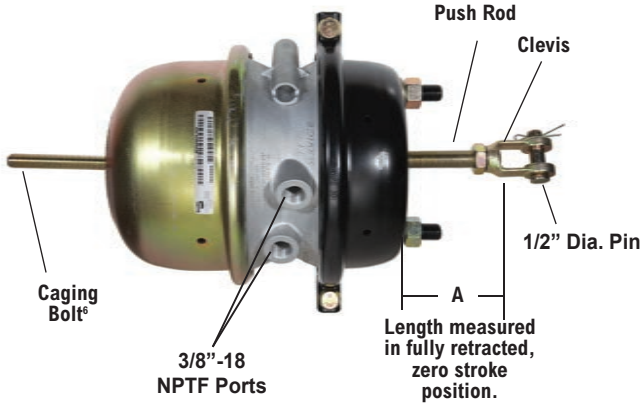


Yoke Assembly Pc. No.	A End to Pin	B Slot Width	C Pin Dia.	D Thread Size
205948N	1-3/4"	9/16"	1/2"	1/2-20
228790N	1-3/4"	9/16"	1/2"	5/8-18
228798N	1-3/4"	9/16"	5/8"	5/8-18
229496N	1-7/8"	13/16"	3/4"	5/8-18
282592N	2"	13/16"	3/4"	3/4-16

Spring Brakes

V.M.R.S. 13-010-025

SD-02-4500



Model & Type	Stroke	A Push Rod Length ¹	Spring Brake Service New Pc. No.		Piggyback Kit ³	Piggyback	Rubber Service Diaphragm ⁴	Clamp Band	Dust Plug ⁵	Service Return Spring
			w/o Clevis	w/Clevis ²						
SB-4™ 20/24	2.25"	8.20"	800828	5007129	K027229	5007123	802488	800908	K034202	800919
EverSure® 20/24	2.50"	5.62"	NT2024LS-56	—	NT2024LS-KIT	NT2024LS-PIG	K025490	800908	K034202	K088770
		8.00"	NT2024LS-80	—						
		2.25"	—	NT2024LS-WC (Welded Clevis)						
EverSure® 20/30	2.50"	5.62"	NT2030STD-56	—	NT2030LS-KIT	NT2030LS-PIG	K073327	800908	K056732	K111604
		8.00"	NT2030STD-80	—						
		2.25"	—	NT2030STD-WC (Welded Clevis)						
SB-4™ 24/24	2.50"	8.00"	800829	5007130	K027230	5007124	802489	800909	K034202	800919
		9.75"	K026559	—						
EverSure® 24/24	2.50"	5.62"	NT2424LS-56	—	NT2424LS-KIT	NT2424LS-PIG	802489	800909	K034202	K088770
		8.00"	NT2424LS-80	—						
		2.25"	—	NT2424LS-WC (Welded Clevis)						
EverSure® 24/30 ELS	3.00"	5.62"	NT2430ELS-56	—	NT2430STD-KIT	NT2430STD-PIG	K071148	800909	K057632	K111604
		8.00"	NT2430STD-80	—						
		2.25"	—	NT2430STD-WC (Welded Clevis)						
SB-4™ 24/30	2.50"	8.00"	800830	5007131	K027231	5007125	802489	800909	K034202	800919
		9.75"	K026561	—						
SB-4™ 24/30 ELS	3.00"	7.80"	5010434	5010402	5011593	801376N	801378	800909	K034202	800920
EverSure® 30/30	2.50"	5.62"	NT3030STD-56	NT3030STD-56TC	NT3030STD-KIT	NT3030STD-PIG	K037502	800910	K057632	800919
		7.80"	NT3030STD-78	NT3030STD-78TC						
		9.75"	K049898	—						
		12.00"	NT3030STD-120	NT3030STD-120TC						
		2.25"	—	NT3030STD-WC (Welded Clevis)						
EverSure® 30/30 ELS	3.00"	8.00"	NT3030ELS-80	NT3030ELS-80TC	NT3030ELS-KIT	NT3030ELS-PIG	801379	800910	K057632	800920
		9.91"	NT3030ELS-99	—						
		2.25"	—	NT3030ELS-WC (Welded Clevis)						
SB-4™ 30/36	2.50"	7.80"	800832	—	K024654	5007127	802490	800910	802067	800919
		9.05"	5007133	—						
		2.25"	—	K102314 (Welded Clevis)						
SB-4™ 30/36 ELS	3.00"	5.62"	K093670	—	K093406	K093405	801379	800910	802067	K088770
		8.00"	K093671	—						
		2.25"	—	K093672 (Welded Clevis)						
SB-4™ 36/36 ELS	3.00"	8.50"	800833	5007134N	K027243	5007128	802491	800911	802067	800920

¹ Push rod length measured in the fully retracted, zero stroke position.

² Yoke piece number 228790N is included for non-welded clevis models. See Clevis/Yoke Assembly information section.

³ Piggyback kit includes: Piggyback assembly, clamp bands with hardware, and a rubber service diaphragm.

⁴ Service diaphragm piece number 802490 should be used when servicing earlier Bendix® Type 30/30 spring brake assemblies with a 2.50" stroke.

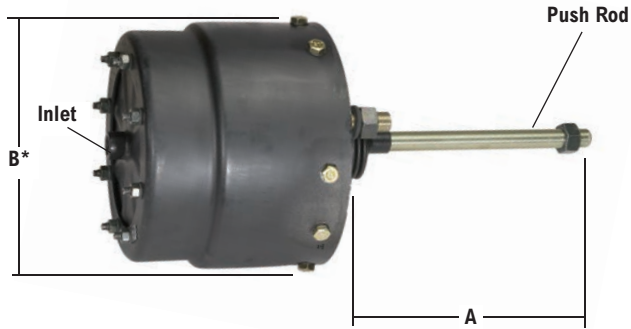
⁵ Dust plug piece number K034202 should be used if servicing earlier Bendix® SB-4™ Type 30/30 spring brake assemblies.

Rotochambers

V.M.R.S. 13-010-034

[i SD-02-1336](#)

Fully Threaded Push Rod



Spring



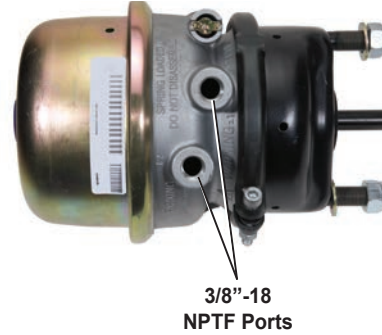
Diaphragm

Type	Service New Pc. No.	Port Size (NPT)	A Push Rod Length	Push Rod Thread	B Diameter*	Diaphragm Material and Size			Spring
						Rubber	Neoprene	C Diameter	
T9	229814N	1/4"-18	13"	1/2"-20	4-3/4"	231472	236524	4-5/16"	231481
T12	229815	3/8"-18	11"	1/2"-20	5-9/32"	231506	236525	4-27/32"	231513
T16	229816N	3/8"-18	7-7/8"	1/2"-20	5-7/8"	231525	236526	5-7/16"	231531
T20	229817N	3/8"-18	6-7/8"	1/2"-20	6-13/32"	231982	236527	5-31/32"	231933
T24	229818N	1/4"-18	5-13/16"	1/2"-20	6-15/16"	231516	236528	6-7/16"	231522
T30	229819N	1/4"-18	9-1/16"	5/8"-18	7-17/32"	231543	236529	7-3/32"	231549
T36	229820N	1/4"-18	8-1/16"	5/8"-18	8-5/32"	231534	236530	7-21/32"	231540
T50	229821N	3/8"-18	10-15/16"	3/4"-16	9-13/32"	231491	236531	8-29/32"	231498

* Diameter "B" measurement includes the bolt heads.

Bendix® EverSure® Air Disc Brake Spring Brake Chamber

V.M.R.S. 13-010-025



Type	Stroke	Spring Brake Service New Pc. No.	Diaphragm Kit	Clamp Ring Kit	Release Tool	Dust Plug	Bellows Kit
T16/24	2.25" (57 mm)	K042457	K052484	K090235	800921	K034202	K090594
T18/24	2.25" (57 mm)	K043329	K052484				
T20/24	2.50" (63 mm)	K041960	K052486	K090236			
T22/24	2.50" (63 mm)	K043148	K052487	K090237			
T24/24	2.50" (63 mm)	K043270	K052488				

The chamber type is noted as TXX/5.6kN on the chamber. Note that 5.6kN refers to the force of the power spring.

Air Disc Brake spring brake chamber for trailers piece number K026451 has been replaced by piece number K043329.

NG-3™ Piston Style Spring Brake Chamber

V.M.R.S. 13-010-025



Type	Stroke	Spring Brake Service New Pc. No.	Diaphragm Kit	Clamp Ring Kit	Bellows Kit
T14/24	2.25" (57 mm)	K026735	—	—	K090594
T16/24	2.25" (57 mm)	K026731	K052484	K090235	
T18/16	2.25" (57 mm)	K027557	K052485		
T18/24	2.50" (63 mm)	K025670	K052486	K090236	
T20/24	2.50" (63 mm)	K025669	K052486		
T22/24	2.50" (63 mm)	K026737	K052488	K090237	
T24/24	2.50" (63 mm)	K026734	K052488		

For additional air disc brake information, refer to section 23 of this catalog.

Air Disc Brake Service Chambers

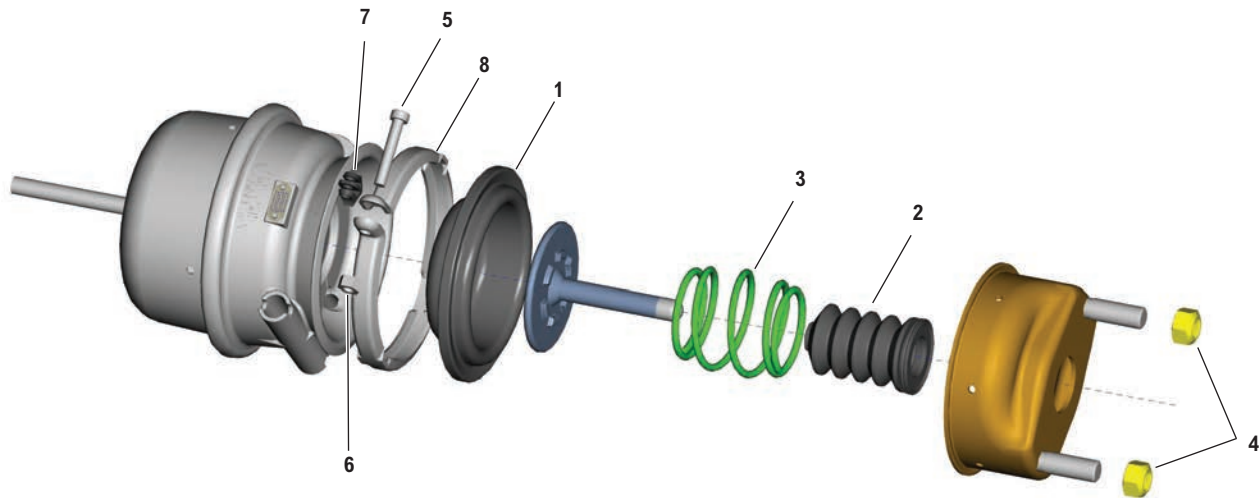
V.M.R.S. 13-010-034



Type	Service New Pc. No.	Stroke	Diaphragm Kit	Clamp Ring Kit	Bellows Kit
T12	K028227	2.25" (57 mm)	—	—	K090594
T14	K028039	2.25" (57 mm)			
T16	K028226	2.25" (57 mm)	K052484	K090235	
T18	K028022	2.50" (63 mm)	K052486	K090236	
T20	K028225	2.50" (63 mm)	K052486		
T22	K028238	2.50" (63 mm)	K052487	K090237	
T24	K028252	2.50" (63 mm)	K052488		

For additional air disc brake information, refer to section 23 of this catalog.

Maintenance Kits for Air Disc Brake Chambers



Item No.	Description	Kit Contents		
		Diaphragm Kit	Clamp Ring Kit	Bellows Kit
1	Diaphragm	1	—	—
2	Bellow	1	—	1
3	Spring	1	—	—
4	Lock Nut	2	—	2
5	Screw	1	1	—
6	Hex Nut	1	1	—
7	Spacing Sleeve	1	1	—
8	Clamp Ring	—	1	—
9	Grease Packet (not shown)	1	—	1

Caution: Be sure to follow the instruction sheet included in the kit when servicing.
 The replacement diaphragm must match the original diaphragm.
 The clamp band torque is 28 Nm. (20 ft-lbs)
 The mounting nut torque is 180 Nm. (133 ft-lbs)

For additional air disc brake information, refer to section 23 of this catalog.